



GENERAL PURPOSE WATER PUMPS

GENERAL PURPOSE WATER PUMP 1"



Model#	WP-1015HM
Size	1"
Engine	Honda GX25 4 Stroke
Pump	Centrifugal Aluminum
Max Flow	34 GPM
Total Head	96 Ft / 38 PSI
Max Suction Head	25 Ft / 10 PSI
Impeller	Aluminum
Solids	No Solids
Weight (dry)	14.3 lbs.

GENERAL PURPOSE WATER PUMP 2"



Model#	WP-2040HM
Size	2"
Engine	Honda GX120 Oil Alert (4.0)
Pump	Centrifugal Aluminum
Max Flow	150 GPM
Total Head	105 Ft / 42 PSI
Max Suction Head	26 Ft / 10 PSI
Impeller	Cast Iron
Solids	No Solids
Weight (dry)	55 lbs.

GENERAL PURPOSE WATER PUMP 2"



Model#	WP-2050HM
Size	2"
Engine	Honda GC160 (5.0)
Pump	Centrifugal Aluminum
Max Flow	150 GPM
Total Head	105 Ft / 40 PSI
Max Suction Head	26 Ft / 10 PSI
Impeller	Cast Iron
Solids	No Solids
Weight (dry)	55 lbs.

GENERAL PURPOSE WATER PUMP 3"



Model#	WP-3050HM
Size	3"
Engine	Honda GX160 Oil Alert (5.5)
Pump	Centrifugal Aluminum
Max Flow	265 GPM
Total Head	105 Ft / 40 PSI
Max Suction Head	26 Ft / 10 PSI
Impeller	Cast Iron
Solids	No Solids
Weight (dry)	65 lbs.



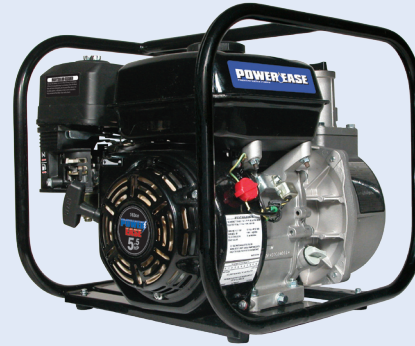
GENERAL PURPOSE WATER PUMPS

GENERAL PURPOSE WATER PUMP 4"



Model#	WP-4080HM
Size	4"
Engine	GX240 Honda Oil Alert (8.0)
Pump	Centrifugal Aluminum
Max Flow	528 GPM
Total Head	102 Ft / 40 PSI
Max Suction Head	26 Ft / 10 PSI
Impeller	Cast Iron
Solids	No Solids
Weight (dry)	87 lbs.

WATER PUMP 2"



Model#	WP-2055CM
Size	2"
Engine	Valley Vantage 160 CC Engine
Pump	Centrifugal Aluminum
Max Flow	110 GPM
Total Head	85 Ft / 35 PSI
Max Suction Head	25 Ft
Impeller	Cast Iron
Solids	No Solids
Weight (dry)	53 lbs.

WATER PUMP 3"



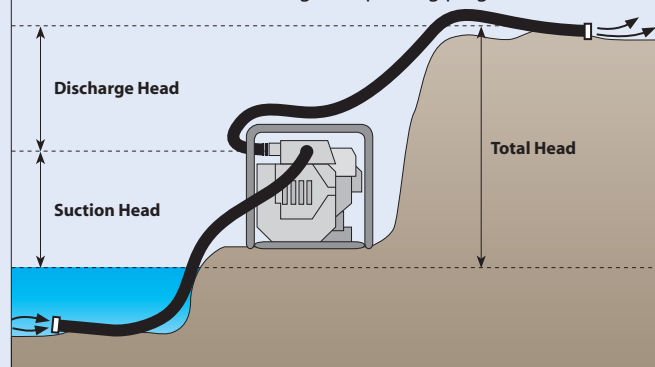
Model#	WP-3065CM
Size	3"
Engine	Valley Vantage 200 CC Engine
Pump	Centrifugal Aluminum
Max Flow	210 GPM
Total Head	98 Ft / 35 PSI
Max Suction Head	25 Ft
Impeller	Cast Iron
Solids	No Solids
Weight (dry)	63 lbs.

HEAD DIAGRAM FOR ALL PUMPS

The following is a diagram to show how to set up a water pump or trash pump in relation to the water level, suction hose and discharge hose.

Total pump head refers to the amount of lift (suction head) and push (discharge head) a pump is capable of. For best performance, place the pump as near to the water source as possible. This produces the greatest output with the least priming time. Since discharge head capability is always greater than suction head capability, it is important that suction head always be the shorter part of the total head. The following chart shows the water pump and trash pump capabilities.

Operation Tip: If the unit does not pump water right away, continue to add water through the priming plug until it is full.





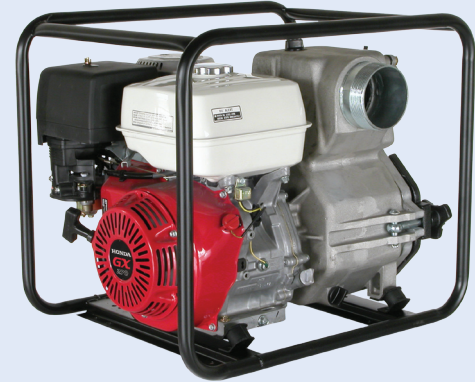
TRASH PUMPS & HIGH PRESSURE TRANSFER PUMPS

TRASH PUMP 3"



Model#	TP-3080HM
Size	3"
Engine	GX240 Honda Oil Alert (8.0)
Pump	Centrifugal Aluminum
Max Flow	286 GPM
Total Head	98 Ft / 38 PSI
Max Suction Head	26 Ft / 10 PSI
Impeller	Cast Iron
Solids	Up to 1" Dia
Weight (dry)	130 lbs.

TRASH PUMP 4"



Model#	TP-4011HM
Size	4"
Engine	GX270 Honda Oil Alert (11.0)
Pump	Centrifugal Aluminum
Max Flow	506 GPM
Total Head	95 Ft / 38 PSI
Max Suction Head	26 Ft / 10 PSI
Impeller	Cast Iron
Solids	Up to 1" Dia
Weight (dry)	149 lbs.

HIGH PRESSURE TRANSFER PUMP

New high pressure system operates at 65 PSI, great for fire fighting and lawn sprinkling.



Model#	HP-2055HM
Size	2"
Engine	Honda GX160 Oil Alert (5.5)
Pump	Centrifugal Aluminum
Max Flow	130 GPM
Total Head	165 Ft / 65 PSI
Max Suction Head	26 Ft / 10 PSI
Impeller	Cast Iron
Solids	No Solids
Weight (dry)	65 lbs.



NYLON TRANSFER PUMPS

NYLON TRANSFER PUMP 2"

This transfer pump is ideal for tank filling, floodwater removal, and lawn and garden watering. The nylon transfer pump can be used for transferring fluids and chemicals or in corrosive environments.



Model#	NP-2055HM
Size	2"
Engine	Honda GX160 Oil Alert (5.5)
Max Flow	200 GPM
Total Head	82 Ft
Max Suction Head	26 Ft
Impeller	Nylon
Weight (dry)	52.5 lbs

NYLON TRANSFER PUMP 2"

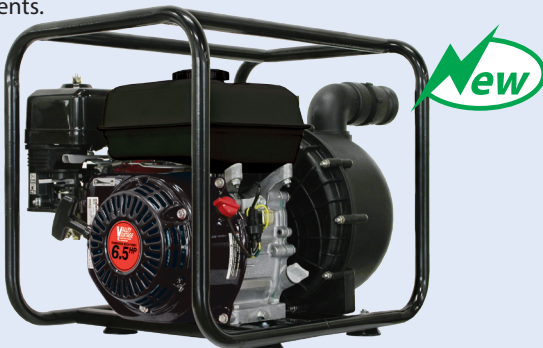
This transfer pump is ideal for tank filling, floodwater removal, and lawn and garden watering. The nylon transfer pump can be used for transferring fluids and chemicals or in corrosive environments.



Model#	NP-2050HM
Size	2"
Engine	Honda GC160 Oil Alert (5.0)
Max Flow	200 GPM
Total Head	80 Ft
Max Suction Head	26 Ft
Impeller	Nylon
Weight (dry)	52 lbs

NYLON TRANSFER PUMP 2"

This transfer pump is ideal for tank filling, floodwater removal, and lawn and garden watering. The nylon transfer pump can be used for transferring fluids and chemicals or in corrosive environments.



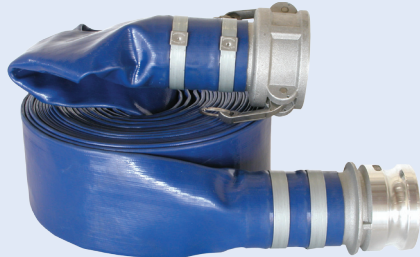
Model#	NP-2065CM
Size	2"
Engine	Valley Vantage 200 CC Engine
Max Flow	200 GPM
Total Head	82 Ft
Max Suction Head	26 Ft
Impeller	Nylon
Weight (dry)	53 lbs



DISCHARGE HOSE KITS, SUCTION HOSE, & SLUDGE PUMP KIT

DISCHARGE HOSE KITS

Temperature Rating: 150° F



▼ Part#	Length	Size	Pressure	Weight
85.400.084	50 ft.	1"	80 PSI	21.0 lbs
85.400.085	50 ft.	2"	80 PSI	22.0 lbs
85.400.086	50 ft.	3"	65 PSI	23.0 lbs
85.400.087	50 ft.	4"	55 PSI	24.0 lbs

DISCHARGE HOSE KITS

WITH POLYPRO CAMLOCKS

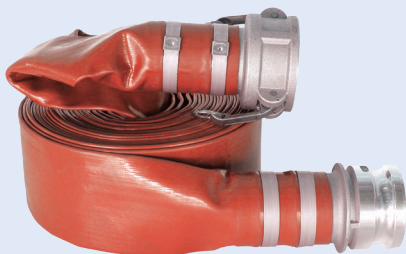
Temperature Rating: 150° F



▼ Part#	Length	Size	Pressure	Weight
85.400.095	50 ft.	2"	80 PSI	22.0 lbs

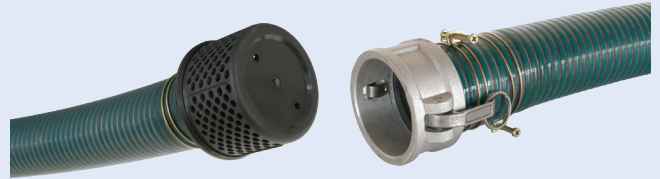
INDUSTRIAL DISCHARGE HOSE KITS

Temperature Rating: 150° F



▼ Part#	Length	Size	Pressure	Weight
85.400.097	50 ft.	2"	150 PSI	23.0 lbs
85.400.098	50 ft.	3"	150 PSI	24.0 lbs

SUCTION HOSE KITS



▼ Part#	Length	Size	Camlock	Strainer	Weight
85.400.088	25 ft.	1"	Alum	Nylon	5 lbs
85.400.089	25 ft.	2"	Alum	Steel	12 lbs
85.400.090	25 ft.	3"	Alum	Steel	16 lbs
85.400.091	25 ft.	4"	Alum	Nylon	20 lbs
85.400.096	25 ft.	2"	Nylon	Nylon	12 lbs

SLUDGE PUMP KIT

A sludge pump kit easily converts a pressure washer into a light duty water pump. The kit comes with a sludge pump, 25 ft discharge hose, 18" suction hose, and hose clamps. It quickly connects to a standard 1/4" coupler.



Convert Your Pressure Washer into a Sludge Pump!

▼ Part#	Size	Weight
85.400.018	2"	12 lbs

Attach to a pressure washer quick connect lance.





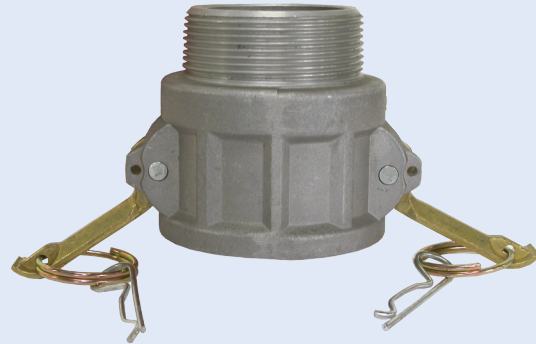
ALUMINUM CAMLOCK FITTINGS

TYPE A CAMLOCK



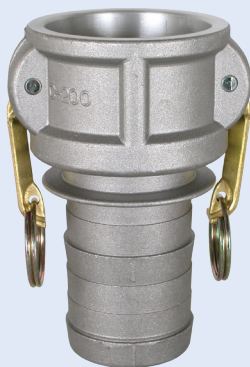
▼ Part#	Size	Thread	Material
90.390.034	¾"	Male coupler X FPT	Aluminum
90.390.100	1"	Male coupler X FPT	Aluminum
90.390.114	1 ¼"	Male coupler X FPT	Aluminum
90.390.112	1 ½"	Male coupler X FPT	Aluminum
90.390.200	2"	Male coupler X FPT	Aluminum
90.390.300	3"	Male coupler X FPT	Aluminum
90.390.400	4"	Male coupler X FPT	Aluminum

TYPE B CAMLOCK



▼ Part#	Size	Thread	Material
90.391.034	¾"	Female coupler X MPT	Aluminum
90.391.100	1"	Female coupler X MPT	Aluminum
90.391.114	1 ¼"	Female coupler X MPT	Aluminum
90.391.112	1 ½"	Female coupler X MPT	Aluminum
90.391.200	2"	Female coupler X MPT	Aluminum
90.391.300	3"	Female coupler X MPT	Aluminum

TYPE C CAMLOCK



▼ Part#	Size	Thread	Material
90.392.034	¾"	Male barb x female coupler	Aluminum
90.392.100	1"	Male barb x female coupler	Aluminum
90.392.114	1 ¼"	Male barb x female coupler	Aluminum
90.392.112	1 ½"	Male barb x female coupler	Aluminum
90.392.200	2"	Male barb x female coupler	Aluminum
90.392.300	3"	Male barb x female coupler	Aluminum
90.392.400	4"	Male barb x female coupler	Aluminum

TYPE D CAMLOCK



▼ Part#	Size	Thread	Material
90.393.034	¾"	Female coupler X FPT	Aluminum
90.393.100	1"	Female coupler X FPT	Aluminum
90.393.114	1 ¼"	Female coupler X FPT	Aluminum
90.393.112	1 ½"	Female coupler X FPT	Aluminum
90.393.200	2"	Female coupler X FPT	Aluminum
90.393.300	3"	Female coupler X FPT	Aluminum



ALUMINUM CAMLOCK FITTINGS

TYPE E CAMLOCK



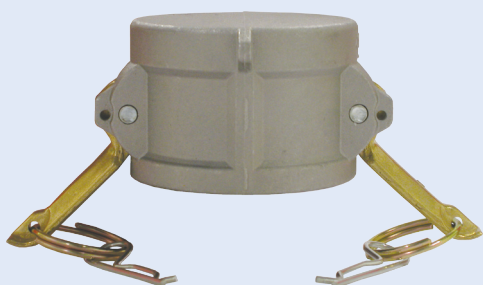
▼ Part#	Size	Thread	Material
90.394.034	3/4"	Male barb x male coupler	Aluminum
90.394.100	1"	Male barb x male coupler	Aluminum
90.394.114	1 1/4"	Male barb x male coupler	Aluminum
90.394.112	1 1/2"	Male barb x male coupler	Aluminum
90.394.200	2"	Male barb x male coupler	Aluminum
90.394.300	3"	Male barb x male coupler	Aluminum
90.394.400	4"	Male barb x male coupler	Aluminum

TYPE F CAMLOCK



▼ Part#	Size	Thread	Material
90.395.034	3/4"	Male coupler X MPT	Aluminum
90.395.100	1"	Male coupler X MPT	Aluminum
90.395.114	1 1/4"	Male coupler X MPT	Aluminum
90.395.112	1 1/2"	Male coupler X MPT	Aluminum
90.395.200	2"	Male coupler X MPT	Aluminum
90.395.300	3"	Male coupler X MPT	Aluminum

TYPE DC CAMLOCK



▼ Part#	Size	Thread	Material
90.396.034	3/4"	Dust Cap	Aluminum
90.396.100	1"	Dust Cap	Aluminum
90.396.114	1 1/4"	Dust Cap	Aluminum
90.396.112	1 1/2"	Dust Cap	Aluminum
90.396.200	2"	Dust Cap	Aluminum
90.396.300	3"	Dust Cap	Aluminum

TYPE DP CAMLOCK



▼ Part#	Size	Thread	Material
90.397.034	3/4"	Dust Plug	Aluminum
90.397.100	1"	Dust Plug	Aluminum
90.397.114	1 1/4"	Dust Plug	Aluminum
90.397.112	1 1/2"	Dust Plug	Aluminum
90.397.200	2"	Dust Plug	Aluminum
90.397.300	3"	Dust Plug	Aluminum



TYPE A CAMLOCK



▼ Part#	Size	Thread	Material
90.720.034	¾"	Male coupler X FPT	Polypropylene
90.720.100	1"	Male coupler X FPT	Polypropylene
90.720.114	1 ¼"	Male coupler X FPT	Polypropylene
90.720.112	1 ½"	Male coupler X FPT	Polypropylene
90.737.040	2"	Male coupler X FPT	Polypropylene
90.720.300	3"	Male coupler X FPT	Polypropylene

TYPE B CAMLOCK



▼ Part#	Size	Thread	Material
90.721.034	¾"	Female coupler X MPT	Polypropylene
90.721.100	1"	Female coupler X MPT	Polypropylene
90.721.114	1 ¼"	Female coupler X MPT	Polypropylene
90.721.112	1 ½"	Female coupler X MPT	Polypropylene
90.737.300	2"	Female coupler X MPT	Polypropylene
90.721.300	3"	Female coupler X MPT	Polypropylene

TYPE C CAMLOCK



▼ Part#	Size	Thread	Material
90.722.034	¾"	Male barb x female coupler	Polypro
90.722.100	1"	Male barb x female coupler	Polypro
90.722.114	1 ¼"	Male barb x female coupler	Polypro
90.722.112	1 ½"	Male barb x female coupler	Polypro
90.737.360	2"	Male barb x female coupler	Polypro
90.722.300	3"	Male barb x female coupler	Polypro

TYPE D CAMLOCK



▼ Part#	Size	Thread	Material
90.723.034	¾"	Female coupler X FPT	Polypropylene
90.723.100	1"	Female coupler X FPT	Polypropylene
90.723.114	1 ¼"	Female coupler X FPT	Polypropylene
90.723.112	1 ½"	Female coupler X FPT	Polypropylene
90.737.240	2"	Female coupler X FPT	Polypropylene
90.723.300	3"	Female coupler X FPT	Polypropylene



POLYPRO CAMLOCK FITTINGS

TYPE E CAMLOCK



▼ Part#	Size	Thread	Material
90.724.034	3/4"	Male barb x male coupler	Polypro
90.724.100	1"	Male barb x male coupler	Polypro
90.724.114	1 1/4"	Male barb x male coupler	Polypro
90.724.112	1 1/2"	Male barb x male coupler	Polypro
90.737.160	2"	Male barb x male coupler	Polypro
90.724.300	3"	Male barb x male coupler	Polypro

TYPE F CAMLOCK



▼ Part#	Size	Thread	Material
90.725.034	3/4"	Male coupler X MPT	Polypropylene
90.725.100	1"	Male coupler X MPT	Polypropylene
90.725.114	1 1/4"	Male coupler X MPT	Polypropylene
90.725.112	1 1/2"	Male coupler X MPT	Polypropylene
90.737.100	2"	Male coupler X MPT	Polypropylene
90.725.300	3"	Male coupler X MPT	Polypropylene

TYPE DC CAMLOCK



▼ Part#	Size	Thread	Material
90.726.034	3/4"	Dust Cap	Polypropylene
90.726.100	1"	Dust Cap	Polypropylene
90.726.114	1 1/4"	Dust Cap	Polypropylene
90.726.112	1 1/2"	Dust Cap	Polypropylene
90.737.500	2"	Dust Cap	Polypropylene
90.726.300	3"	Dust Cap	Polypropylene

TYPE DP CAMLOCK



▼ Part#	Size	Thread	Material
90.727.034	3/4"	Dust Plug	Polypropylene
90.727.100	1"	Dust Plug	Polypropylene
90.727.114	1 1/4"	Dust Plug	Polypropylene
90.727.112	1 1/2"	Dust Plug	Polypropylene
90.737.440	2"	Dust Plug	Polypropylene
90.727.300	3"	Dust Plug	Polypropylene